

AULTMAN

CENTER of  
EXCELLENCE

## Orthopaedics

Many orthopaedic problems need more than one medical service. You may require emergency room treatment, medical treatment, surgery, therapy, medical equipment for the home or intense on-site rehabilitation.



## Heart

Aultman Hospital has been named one of the nation's 50 Top Cardiovascular Hospitals by Thomson Reuters for 2011. At the Aultman Heart Center, prevention is a priority. Our education and risk factor identification programs can help you keep your heart healthy.



## Cancer

The Aultman Cancer Center is a fusion of ideas, technology, talent and compassion. The physicians associated with Aultman Cancer Center evaluate and design individual treatment plans based on the type, stage and aggressiveness of the patient's disease.



## Neurosurgery/ Stroke

Trauma or illness involving the brain, spinal cord or nervous system can be a frightening experience for a patient and loved ones. Take comfort in knowing you are in the hands of some of the region's most skilled neurological experts, neurosurgeons and stroke specialists.



## Women/ Children

Together with our patients, the Aultman Birth Center is promoting and uniting families for life. We take a team approach to providing the best care for you and your baby — under one roof.



## Emergency/ Trauma

Aultman's Emergency/Trauma Center, staffed by board-certified physicians, is designed to allow the fastest access possible to the latest in emergency-care technology.



## Critical Care Medicine

Going to an intensive care unit (ICU) can be a very emotional experience. Aultman patients receive specialized care from our Intensivist Program and our dedicated group of critical care nurses, critical care pharmacists, respiratory therapists and intensivists.

**AULTMAN**  
Aultman is My Hospital™

# AULTMAN BREAST CARE CENTER: A CENTER OF EXCELLENCE

Early detection is crucial in the fight against many diseases, including breast cancer.

**B**reast cancers found during screening exams such as mammograms are more likely to be smaller and contained within the breast. When women find breast cancers after experiencing symptoms, the cancer tends to be larger and more likely to have spread beyond the breast.

Aultman offers a full range of screening and diagnostic services including mammography, high-resolution ultrasound and breast MRI. Specialists from radiology, pathology, surgery, medical and radiation oncology, genetics and nursing work together to provide the highest level of care for patients.

### Digital Mammography

The Aultman Breast Care Center and Aultman North offer digital mammography. The advanced technology provides a faster exam for improved patient comfort and a 25 percent reduction in radiation.

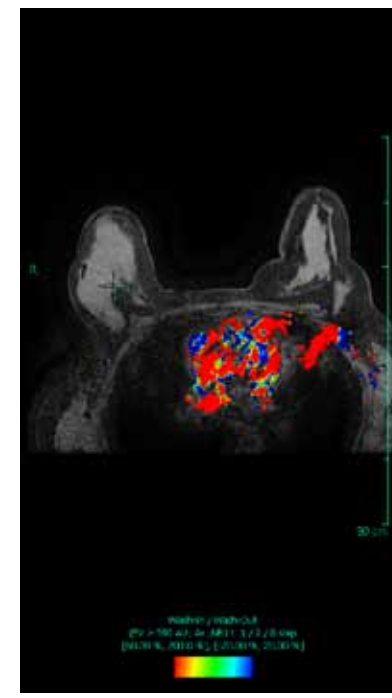
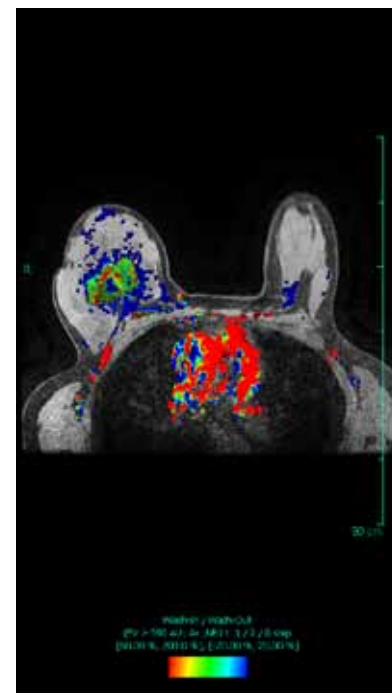
"Images captured in digital mammography can detect more cancers in certain patient groups," said Thomas Poulton, M.D., medical director of radiology at Aultman, who specializes in breast imaging. "The images can be transmitted electronically for easier sharing among physicians who are involved in patient care and treatment."

### Mammography Guidelines

Although there are various recommendations on when women should begin receiving annual mammograms, Aultman follows the



■ Thomas Poulton, M.D.



■ The breast MRI image on the left shows a patient before breast cancer treatment. The image on the right shows the complete resolution of the tumor in the right breast.

**“Aultman is the only facility in Stark and Summit counties to have earned both the NAPBC accreditation and the ACR's Center of Excellence designation.”**

—THOMAS POULTON, M.D.

American Cancer Society guidelines. "Women should receive mammograms every year beginning at age 40," Poulton said. "If you have a strong family history of breast cancer, you should start annual mammograms even sooner."

### Breast MRI

Breast MRIs detect breast cancer and other abnormalities. Breast MRIs are available at the Aultman Breast Care Center. "A breast MRI captures multiple breast images,

and a computer combines the images to generate detailed pictures," Poulton said. "We usually perform breast MRI when we need more information than a mammogram can provide, such as for a patient who is at high risk for breast cancer."

### Breast Care Center of Excellence

Aultman's Breast Care Center is the only Stark County facility to have earned the "Center of Excellence" designation from the American College of Radiology (ACR). "The designation means we offer all of the services required to be a center of excellence and have exceeded standards of quality in breast care," Poulton explained. "We are accredited in all facets of breast care, from mammography and breast ultrasound to stereotactic/core biopsies." The Aultman Breast Care Center is also Stark County's only facility to be fully accredited by the National Accreditation Program for Breast Centers (NAPBC). "Aultman is the only facility in Stark and Summit counties to have earned both the NAPBC accreditation and the ACR's Center of Excellence designation," Poulton shared.

### Breast Cancer Symptoms

The most common sign of breast cancer is a new lump or mass. Other signs of breast cancer include the following:

- Swelling of all or part of the breast.
- Skin irritation or dimpling.
- Breast pain.
- Nipple pain or the nipple turning inward.
- Redness, scaliness or thickening of the nipple or breast skin.
- A nipple discharge other than breast milk.

Although most breast changes don't turn out to be cancer, see your doctor if you find a lump or have other changes in your breast. Even if you've just had a mammogram with normal results, it's important to have your doctor evaluate any changes.

## Honoring Radiologic Technologists

National Radiologic Technology Week® is Nov. 6-12.

Radiologic technologists are medical professionals who perform imaging procedures and exams. They work closely with radiologists to produce radiographic studies, which are used to locate injuries and diagnose or follow various medical and surgical conditions.

Radiologic technologists receive and interpret requests, document patient information in a radiology information system, gain the cooperation of the patient, position the patient appropriately, protect patients from secondary radiation, operate radiographic equipment, review images for accuracy and record results.

Technologists are educated in anatomy/physiology, patient positioning, examination techniques, equipment protocols, radiation physics, radiation safety, radiation protection, quality control and patient care. Radiologic technologists are registered by American Registry of Radiologic Technologists as well as licensed by the state of Ohio. They are required to have 24 hours of continuing education biannually.

Radiologic Technology Week is celebrated annually to recognize the vital work of Radiologic Technologists across the nation.



The celebration takes place each November to commemorate the anniversary of the X-ray's discovery by Wilhelm Conrad Roentgen on Nov. 8, 1895. The weeklong celebration calls attention



to the important role medical imaging and radiation therapy professionals play in patient care and health care safety.

## CARING FOR THE COMMUNITY

Beyond their jobs as medical imaging professionals, members of the Aultman Radiology Department make a difference in the community.

The team members organize luncheons throughout the year — including the popular "soup kitchen" events featuring homemade soups and desserts — to raise funds for the American Cancer Society and the National MS Society. The team also uses funds from the soup kitchens and gift-basket raffles to participate in the local Community Christmas program. "Last year, we brightened the holiday season for 35 people in need," said Radiology Director Christine Donato. "So far this year, we've raised \$5,000 for the charities we support."

In addition to the fundraisers, employees participate in the Heart Walk, Making Strides Against Breast Cancer Walk and the MS Walk. Many team members also support Aultman's Adopt-a-Need program that provides baby necessities, personal care items and cleaning supplies to six local organizations that do not receive government or United Way support. "We're fortunate in this department," Donato said, "and we're active in giving back to our community."



■ Radiology staff members support the community by raising funds through soup kitchens and basket raffles (above), along with participating in the Making Strides Against Breast Cancer Walk (below).



## BECOME A RADIOLOGIC TECHNOLOGIST

Aultman has a long history of training radiologic technologists. To meet the higher levels of education soon required for credentialing, Aultman College of Nursing and Health Sciences now offers an Associate of Science in Radiography degree program. Graduates of this program are eligible to take the American Registry of Radiologic Technologists (ARRT) certification exam.

To be considered for admission to the radiography program, you must meet the following admission requirements:

- High school GPA of 3.0 or greater or GED score of 2250 or greater  
**AND**
- ACT composite score of 20 or greater or SAT combined score of 950 or greater  
**OR**
- College GPA of 2.5 or greater with six credit hours or more of coursework

The application deadline for Fall 2012 admission is Jan. 15, 2012. Learn more about the radiography program and admission requirements at [www.aultmancollege.edu](http://www.aultmancollege.edu).

**AULTMAN** College

# AULTMAN RADIOLOGY: THE "IMAGE" OF HEALTH

**A**ultman Radiology is a full-service department featuring board-certified radiologists on-site 24/7, advanced imaging technology and 210 radiologic technologists. The team members are dedicated to providing high-quality images that play a vital role in patient care.

The imaging services teams within the Aultman Radiology Department include general diagnostic, mammography, CT, MRI, ultrasound, nuclear medicine, bone density, PET/CT, interventional radiology, RIS/PACS, radiology receiving, imaging support services and quality management. Aultman radiologic technologists perform more than 300,000 exams annually.

Aultman Imaging Services is accredited by the American College of Radiology for MRI, CT, ultrasound, mammography and stereotactic biopsy. Learn more about radiology and Aultman's innovative technology.



■ Computed Tomography (CT) is the use of a rotating X-ray unit to obtain image "slices" of anatomy at different levels within the body. A computer then stacks and assembles the individual slices, creating a diagnostic image that allows physicians to view the inside of organs.



■ Magnetic Resonance Imaging (MRI) exposes the atoms in the patient's body to a strong magnetic field. A radiofrequency pulse is applied to the field, which knocks the atoms out of alignment until the pulse stops. In the process, the atoms give off signals that are measured by a computer and processed to create detailed images of the patient's anatomy. Aultman is the first hospital in Northeastern Ohio to have a Widebore MRI. It features a wider opening to increase comfort for larger and claustrophobic patients, along with faster scan times and improved image quality.



■ Single-Photon Emission Computer Tomography (SPECT) is a type of nuclear medicine exam in which gamma photon-emitting radionuclides are administered and then detected by gamma cameras rotated around the patient and combined with low-dose CT images, allowing for better anatomic visualization.



■ X-ray technology uses radiation to produce black and white images of anatomy. The images are captured on film, computer or videotape. X-rays detect bone fractures, find foreign objects in the body and demonstrate the relationship between bone and soft tissue. Bone densitometry uses a special type of X-ray equipment to measure bone mineral density at a specific site - usually the wrist, heel, spine or hip - or to calculate total body bone mineral content.



■ Ultrasound uses sound waves to obtain images of organs and tissues in the body. During an ultrasound examination, the sonographer places a transducer in contact with the patient's body. The transducer emits high-frequency sound waves that pass through the body, sending back "echoes" as they bounce off organs and tissues. Special computer equipment converts those echoes into visual data.



■ Digital Mammography produces diagnostic digital images of breast tissue using low-dose equipment.



■ Cardiovascular Interventional Radiology is the use sophisticated imaging techniques to help guide catheters, vena cava filters, stents or other tools through the body. Using these techniques, disease can be treated without open surgery.



■ Radiology Information System/Picture Archiving and Communication System (RIS/PACS): RIS is a networked radiology software platform that stores, manipulates and distributes patient data. PACS is a Web-based radiology software platform that archives, retrieves, distributes and presents imaging studies for advanced visualization and primary interpretation. All images are crisp, digital images that can be sent anywhere.



■ Nuclear Medicine is administering trace amounts of radiopharmaceuticals to a patient to obtain information about organs, tissues and bone. Positron Emission Tomography (PET/CT) is a nuclear medicine imaging tool that combines a PET scan and a CT scan. PET/CT scans allow clinicians to pinpoint the location of cancer within the body before making treatment recommendations. Aultman currently uses mobile PET/CT technology and will be installing a fixed unit in 2012.

AULTMAN: A CENTER OF  
EXCELLENCE FOR ...



IMAGING SERVICES